

■ Large - Black
大焦点 - 黑色

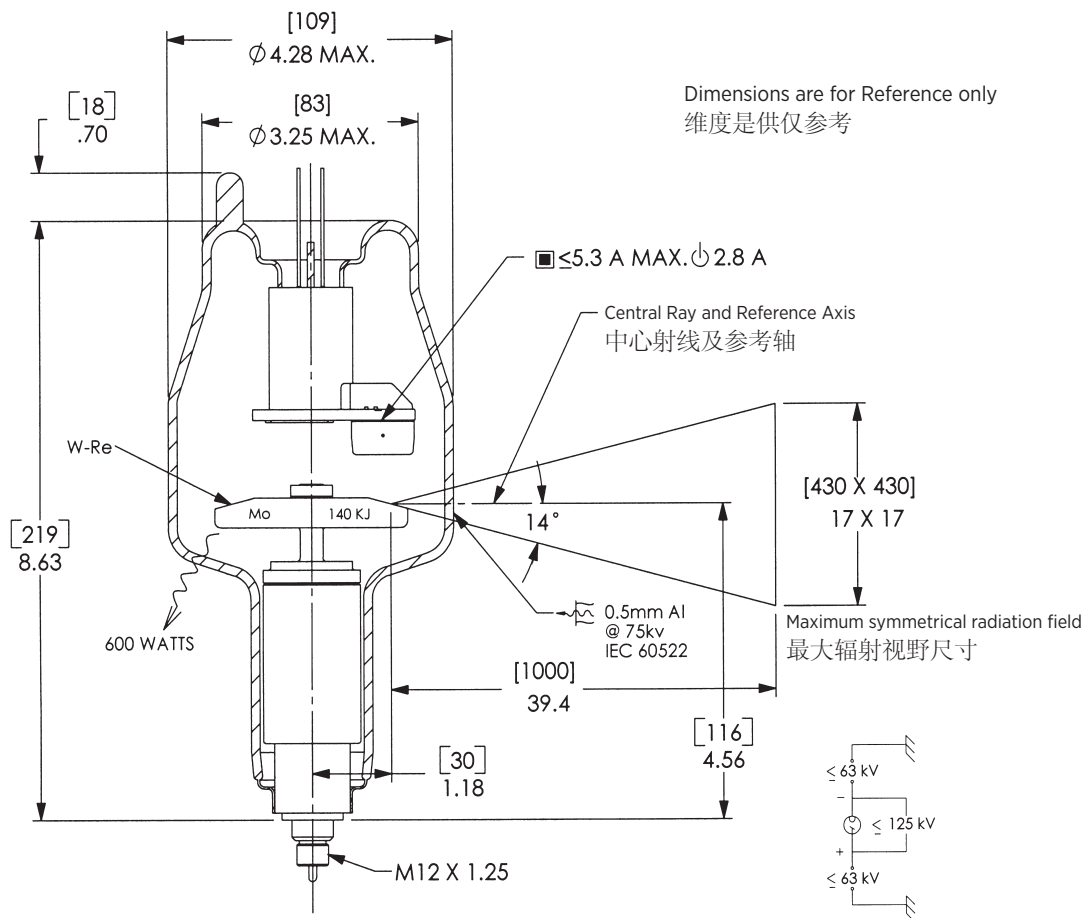
■ Small - White
小焦点 - 白色

⏻ Stand - By
备用

⏻ Frame or Chasis
框架或底盘

⊕ X-Ray Tube
X 射线管

⚡ Radiation Filter or Filtration
辐射过滤器或过滤



Note: Document originally drafted in the English language.

注释：文件最初用英语起草。

Product Description

The RAD-11 is a 2.87" (73mm) 125 kV, 140 kJ (196 kHU) maximum anode heat content, rotating anode insert. This insert is specifically designed for general radiographic and fluoro/spotfilm procedures. The insert features a 14° rhenium-tungsten molybdenum target and is available with the following nominal focal spots:

0.8
IEC 60336

Nominal Anode Input Power
22 kW IEC 60613

For the equivalent anode input power of 60 Watts

产品说明

RAD-11 是一款具有 2.87" (73 mm) 靶盘, 125 kV, 140 kJ (196 kHU) 最大阳极热容量的旋转阳极 X 射线管芯。此管芯经专门设计, 可适用于大功率普通放射成像和荧光分光光度计/点片程序。该管芯的靶盘结构为 14° 靶角, 铼钨钼合金靶材, 可提供下列尺寸的标称焦点:

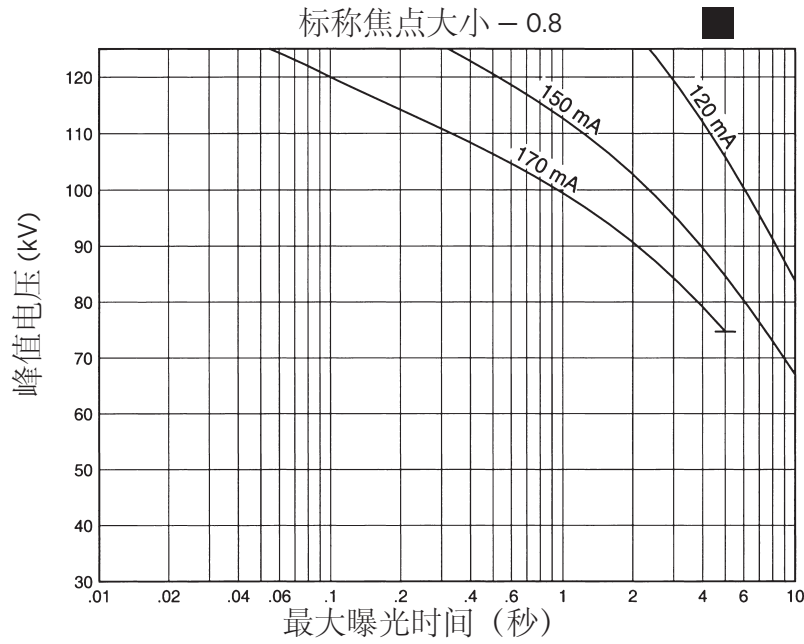
0.8
IEC 60336

标称阳极输入功率
22 kW IEC 60613

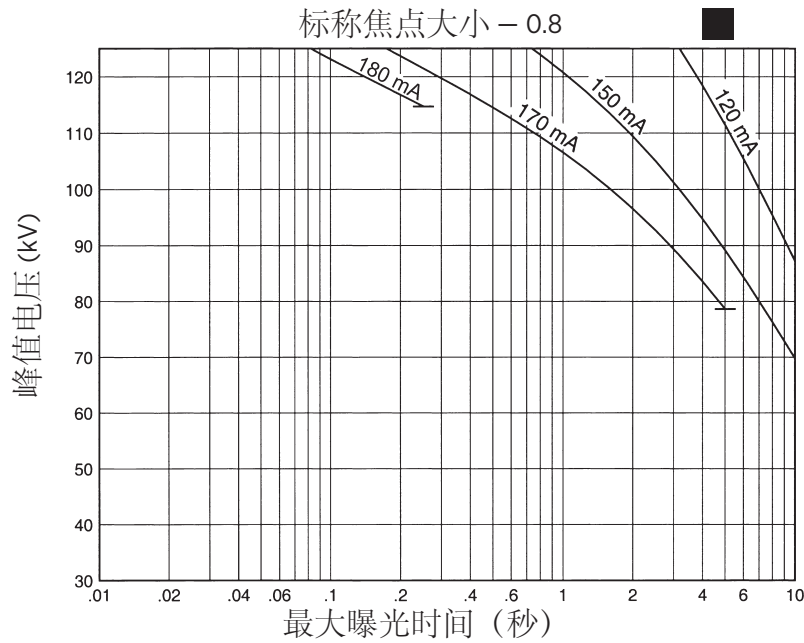
适用于 60 瓦的等效阳极 输入功率

3 Ø 恒定电压 

50 Hz



60 Hz

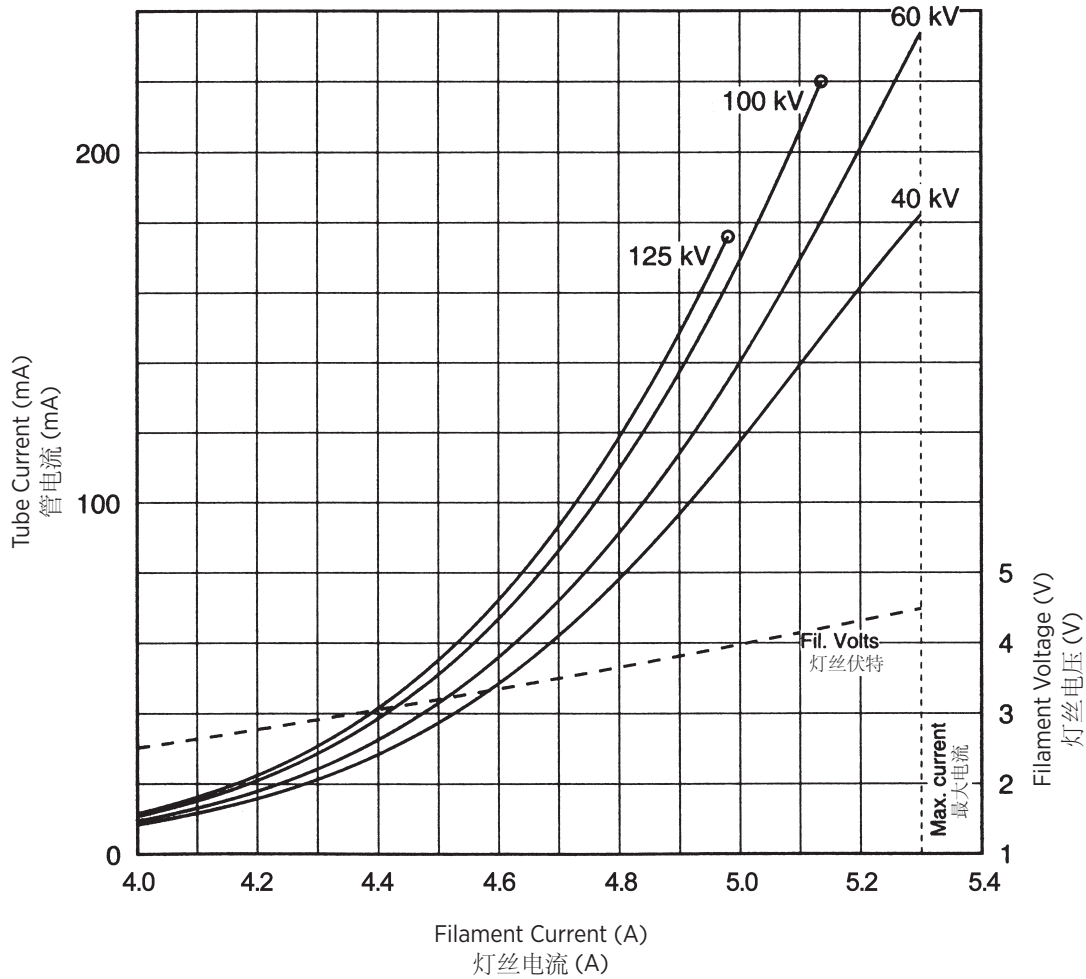


Nominal anode input power for the anode heat content 40%. IEC 60613

阳极热容量 40% 的标称阳极输入功率。IEC 60613

3 Ø 全波

THREE PHASE EMISSION (± .15 A) 三相发射 (± 0.15A)
0.8 ■



Note:
When using these emission curves for trial exposures, refer to the power rating curves shown for maximum kV, tube emission, filament current, exposure time, and target speed.

注释:
当为试验曝光使用这些辐射曲线时, 请同时参考额定功率曲线中与最大管电压、管电流、灯丝电流、曝光时间和阳极靶转速相关的限制条件。

ANODE HEATING AND COOLING CURVES
阳极加热与冷却曲线

