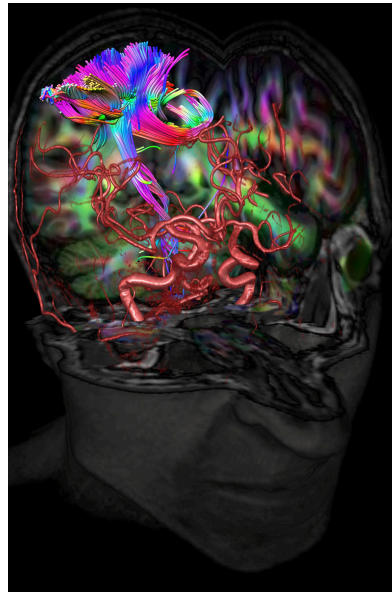
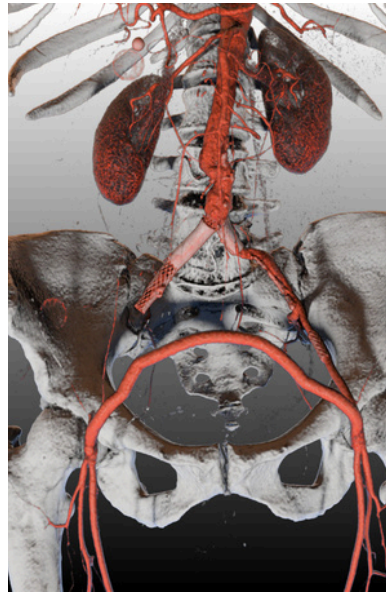


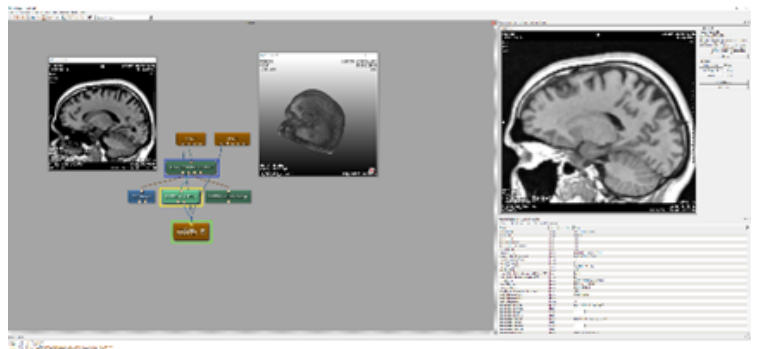
MeVis



MeVisLab SDK

The MeVisLab SDK is a development environment for rapid prototyping and product development of medical and industrial imaging applications.

- Develop prototypes by using one of more than 3000 pre-defined basic and advanced image processing modules (2D up to 6D) in MeVisLab IDE.
- Create powerful hierarchical image processing pipelines and visualization networks without writing a single line of code.
- Directly integrate common AI frameworks like PyTorch or TensorFlow via Python scripting.
- Visualization of complex 3D scenes using Open Inventor scene graphs or create photo realistic renderings by using MeVisLab Path Tracer for Inventor Scenes.
- Develop your own user interfaces and add Python scripting in MeVisLab text editor MATE.
- Debug your applications, develop, and execute automated tests in MeVisLab TestCenter.
- Inspect performance and resource consumptions of your applications by using the MeVisLab Profiler.
- Develop your own C++ Modules





MeVisLab Application Builder

The MeVisLab ApplicationBuilder allows you to create installable executables to deliver to your customers. Resulting applications run standalone on client computers, in a browser window or embedded into your own user interface.

- Create installable executables from your networks developed in MeVisLab SDK.
- Distribute installers to your customers by using the MeVisLab ApplicationBuilder.
- Your Modules and sources are encrypted so that your intellectual property is guaranteed.
- Executables generated by MeVisLab ApplicationBuilder require a separate runtime license. Multiple licensing options are available, depending on your needs.

